

Sustain-6

Marso, N Eng J Med, 2016 - <https://doi.org/10.1056/nejmoa1607141>

Essai RCT, analyse statistique et éventuelle critique.

Population n=x patients, critères d'inclusions. description de la population. Randomisation 1:1

Molécule nom posologie v. placebo

Critère de jugement principal MACE (description) et éventuelle critique.

Résultat principal -20% du critère de jugement principal à 48 mois. }}

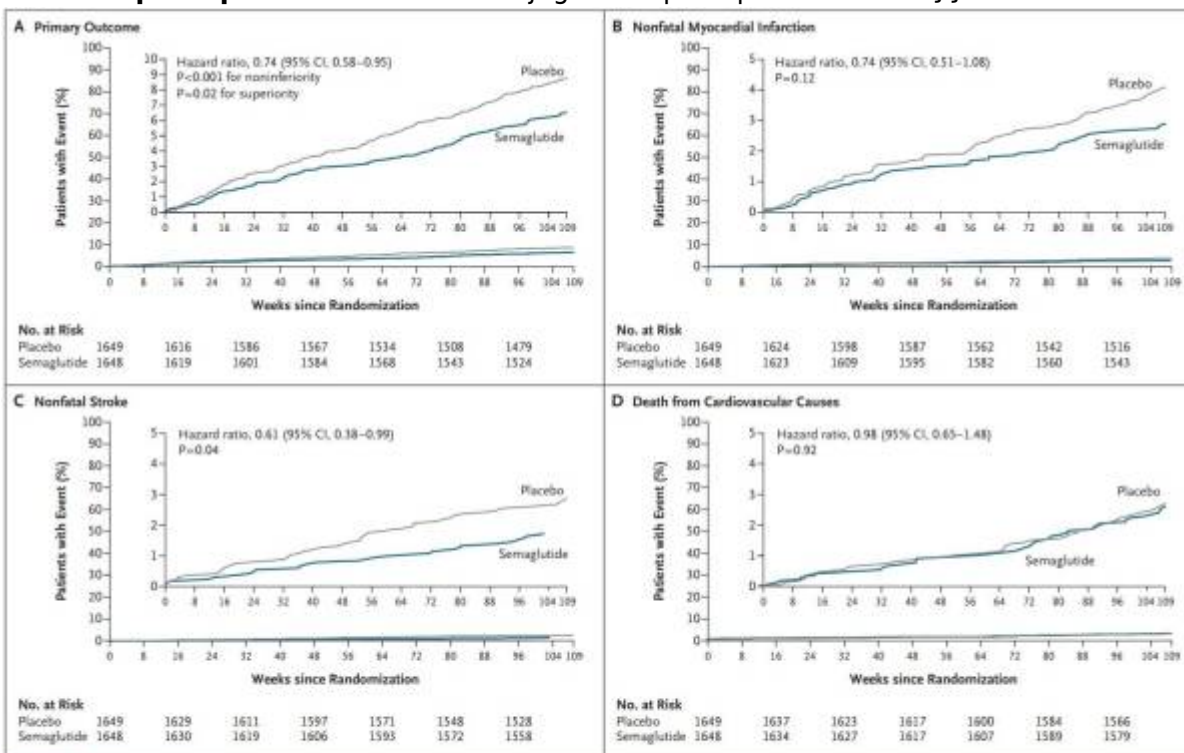


Figure 1. Cardiovascular Outcomes.

Shown are Kaplan–Meier plots of the primary outcome (a composite of cardiovascular death, nonfatal myocardial infarction, or nonfatal stroke) (Panel A), nonfatal myocardial infarction (Panel B), nonfatal stroke (Panel C), and death from cardiovascular causes (Panel D). The trial included a planned observation period of 109 weeks for all patients (a 104-week treatment period with a 5-week follow-up period). In Panel C, there were no events in the semaglutide group after week 104. Insets show the same data on an expanded y axis.

From: <https://clementbecle.fr/> - **cb_cardio**

Permanent link: <https://clementbecle.fr/doku.php?id=sustain-6&rev=1762166533>

Last update: **2025/11/03 11:42**

